

**Tennyson Avenue
Motspur Park, KT3 6LZ**

£725,000 Freehold



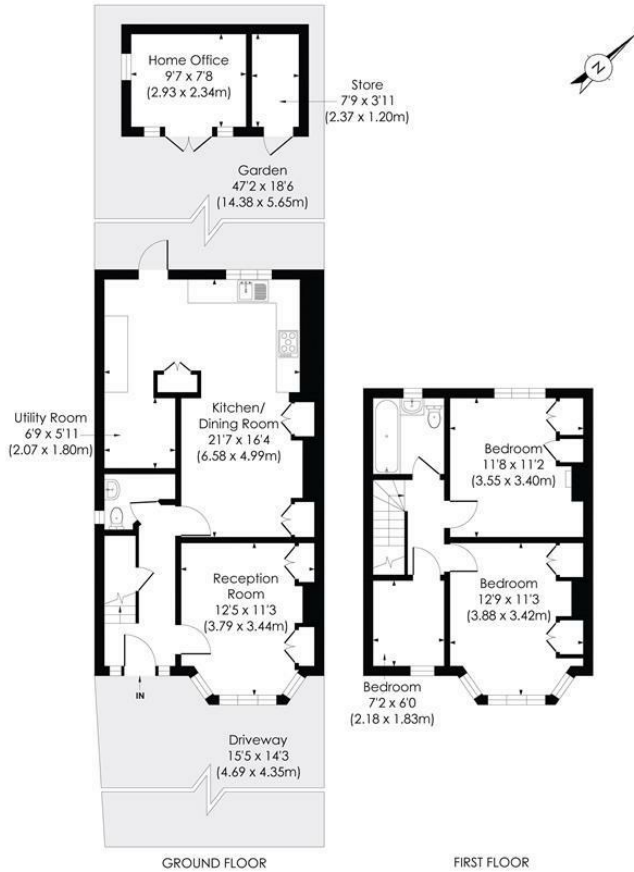
This superb THREE BEDROOM rear extended end of terrace house has off street parking and is perfectly located for Motspur Park Station. An excellent first/second time purchase with separate front reception room, modern kitchen/dining room, downstairs w.c, three bedrooms and a modern family bathroom. Potential to extend into the loft space s.t.p.p.

TENNYSON AVENUE, KT3

Approx. Gross Internal Floor Area

1099 Sq. ft./102.12 Sq. m (Including Outbuilding)

993 Sq. ft./109.20 Sq. m (Excluding Outbuilding)

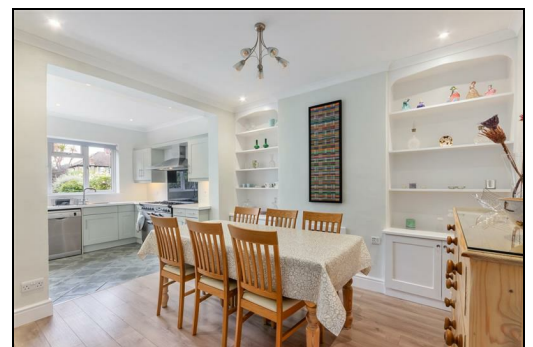


© Pixangle Property Marketing Ltd. info@pixangle.com Tel: 0208 870 2118

pixangle
PROPERTY MARKETING

This floor plan has been prepared for the purpose of illustration only in accordance with the latest RICS code of measuring practice and is not to scale. All measurements and areas are approximate and whilst every effort has been made to ensure the accuracy of the plan contained here, no responsibility is taken for any error, omission or misstatement.

- Three Bedrooms
- 1930's End of Terrace House
- Close to Motspur Park Station
- Off Street Parking and Side Access
- Extended Kitchen/Dining Room
- Potential to Extend S.T.P.P
- Downstairs W.C
- Home Office
- EPC - D
- Council Tax Band - E



Energy Efficiency Rating		Current	Possible
Low energy efficient - lower running costs			
A	(91-100)		87
B	(81-90)		
C	(69-80)	68	
D	(55-68)		
E	(39-54)		
F	(21-38)		
G	(1-20)		
High energy efficient - higher running costs			
England & Wales		EU Directive 2002/91/EC	

For Free Mortgage Quote and Best Mortgage Rates, call Ellisons Mortgage Advisor on 0208 944 9595



Although these particulars are believed to be correct, their accuracy is not guaranteed and they do not form part of any contract.

Celebrating 30 years of successful Sales and Lettings in Merton

